

HUDSON RIVER PARK GANSEVOORT PENINSULA

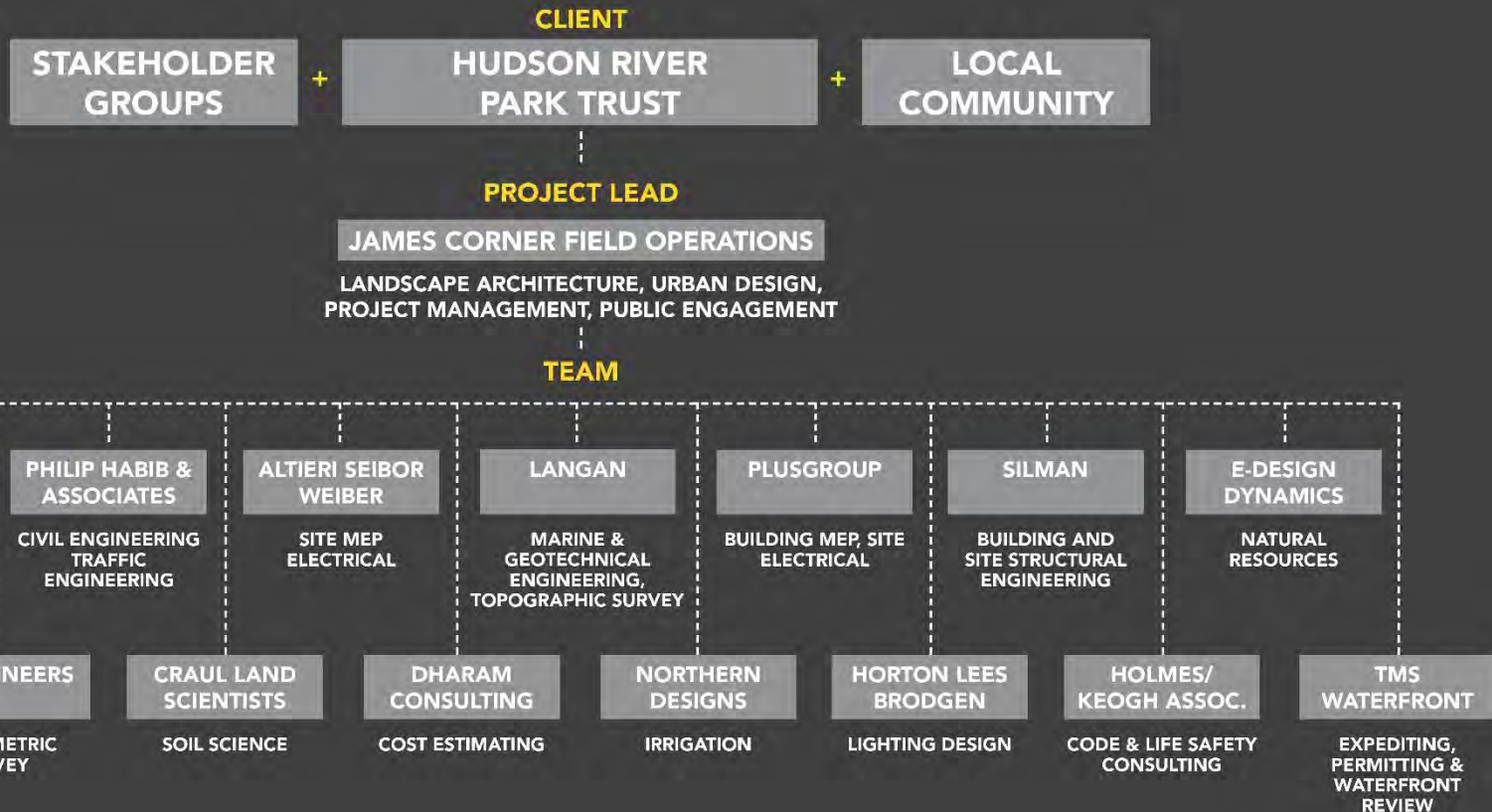
03.06.2019



AGENDA

- **Team Introductions**
- **Presentation**
- **Q & A**
- **Interactive Exercise**
- **Wrap-up + Next steps**

THE TEAM



FIELD OPERATIONS CORE TEAM



JAMES CORNER

Founding Partner & CEO
Design Director



LISA SWITKIN

Senior Principal
Design Director



KAREN TAMIR

Principal in Charge



SANJUKTA SEN

Project Manager
Lead Designer



CRICKET DAY

Project Designer

SUB-CONSULTANTS



JONATHAN GOLDSTICK

Langan



ERIC BUNGE

nArchitects



ERIC ROTHSTEIN

eDesign Dynamics



SHEA THORVALDSEN

TMS Waterfront

CONNECTING TO NATURE IN THE CITY



INTERACTIVE SOCIAL SPACES



JAMES
CORNER
FIELD
OPERATIONS

INTEGRATING LOCAL CULTURE & HISTORY



ENVIRONMENTAL, ECONOMIC & SOCIAL RESILIENCE



JAMES
CORNER
FIELDWORKS
OPERATIONS
FIELD
CREATION

BUILDING COMMUNITY





**Langan
eDesign Dynamics**



**Langan
Northern Design
Craul Land Scientist**



**Philip Habib and Associates
Northern Design
Craul Land Scientist
Silman**



**Philip Habib and Associates
Northern Design
Craul Land Scientist
Silman**



**nArchitects
PlusGroup**

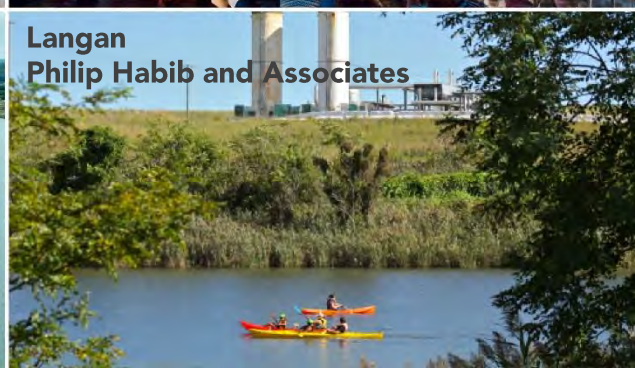


**Philip Habib and Associates
Northern Design
Craul Land Scientist**



Northern Design

JAMES
CORNER
FIELD
OPERATIONS



**Langan
Philip Habib and Associates**



**nArchitects
KS Engineering
HLB lighting**

**CENTRAL WATERFRONT
SEATTLE
26 BLOCKS**









JAMES
CORNER
FIELD
OPERATIONS

**LIGHT PENETRATING
SURFACE**



**PERMEABLE
PROMENADE**



**NATIVE
SHORELINE HABITATS**



**SOLAR LIT
RAILING**



**STORMWATER
GARDENS**



**RESTORED
KELP FOREST**



**JUVENILE SALMON
MIGRATION CORRIDOR**





**DOMINO PARK
BROOKLYN, NY
6 ACRES, ¼ MILE**

















**RIVERFRONT PARK
NEWARK, NJ
11 ACRES, 1 MILE LONG**





JAMES
CORNER
FIELD
OPERATIONS



JAMES
CORNER
FIELD
OPERATIONS

**COLUMBIA UNIVERSITY
MUSCOTA MARSH
NEW YORK
1.2 ACRES**





**CORNELL TECH CAMPUS
ROOSEVELT ISLAND
NEW YORK
12 ACRES OPEN SPACE**





JAMES
CORNER
FIELD
OPERATIONS

JAMES
CORNER
FIELD
OPERATIONS



**NAVY YARDS CENTRAL GREEN
PHILADELPHIA
5 ACRES**



An aerial photograph of the Princeton University campus and its surrounding landscape. The image shows a mix of green spaces, including a large golf course on the left, various sports fields, and a baseball stadium. A dark river flows through the center of the campus. In the foreground, there are large green fields, some of which appear to be solar panels. The background shows a dense residential area with many houses and trees. The overall scene is a blend of natural beauty and urban development.

**PRINCETON UNIVERSITY
NEW JERSEY
CAMPUS LANDSCAPE ARCHITECT**

**WE ARE INVESTED IN DEEP
COLLABORATION AS A
MEANS TO BETTER DESIGN.
OUR WORKING STYLE IS
ITERATIVE, OPEN AND
CONVERSATIONAL.**

PRE-CONCEPT AND ANALYSIS

LEARN . REVIEW. INVESTIGATE.

LISTEN. GET FAMILIAR WITH THE SITE

LISTEN. ENGAGE.

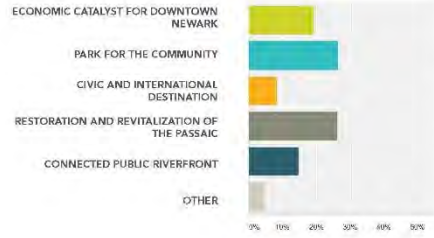


WHAT GREAT STREET SHOULD NICOLLET ASPIRE TO?

PICK YOUR TOP TWO CORNER FIELD OPERATIONS

- NICOLLET MALL** MINNEAPOLIS, MN (0.8 MILES)
- THIRD STREET PROMENADE** SANTA MONICA, CA (0.4 MILES)
- 16TH STREET MALL** DENVER, CO (0.8 MILES)
- MICHIGAN AVENUE** CHICAGO, IL (2.5 MILES)
- PEARL STREET** BOULDER, CO (0.3 MILES)
- STEPHEN AVENUE** CALGARY, CANADA (1.0 MILE)
- EXHIBITION ROAD** EDIN, UK (0.4 MILES)
- STATE STREET** MADISON, WI (0.5 MILES)
- PLACE JACQUES CARTIER** MONTREAL, CANADA (0.1 MILES)

Q1: WHAT IS YOUR GREATEST AMBITION FOR THE NEWARK RIVERFRONT?



TOP RESPONSES:

- RESTORATION OF THE PASSAIC
- PARK FOR THE COMMUNITY
- ECONOMIC CATALYST (CONDUIT)

Q2: WHAT WOULD YOU MOST LIKE TO DO ON THE RIVERFRONT? (MARK YOUR TOP 2 CHOICES)



TOP RESPONSES:

- SIT & RELAX



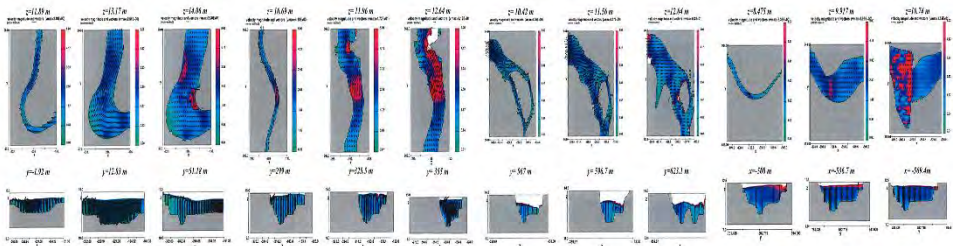
SURVEY. INVESTIGATE.



High Line Site Visit, New York, NY

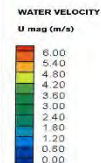
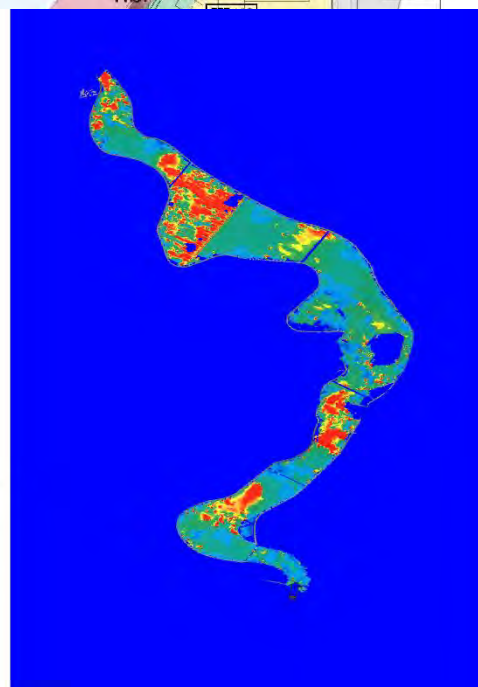
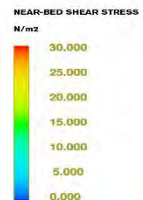
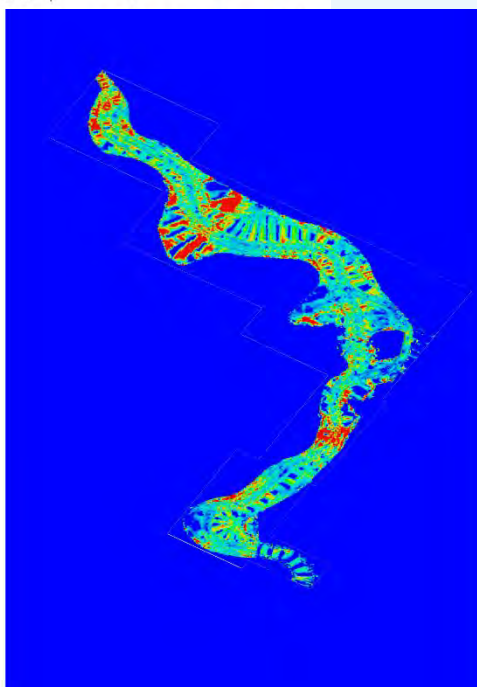
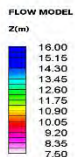
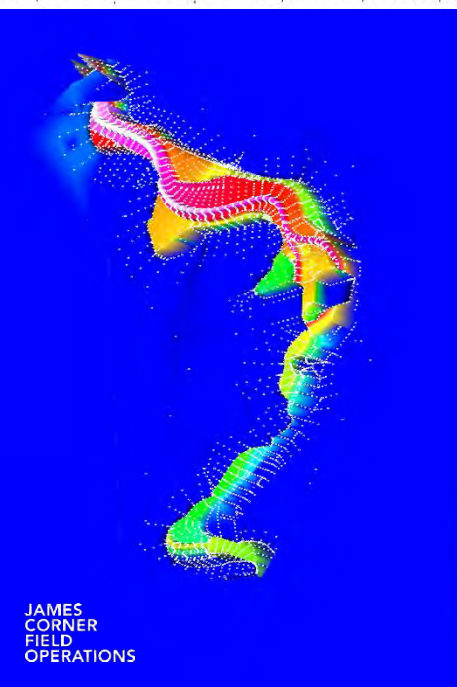
JAMES
CORNER
FIELD
OPERATIONS

MAP. ANALYZE.



- ADVISORY ZONE V
- AREA OF MODERATE WAVE ACTION
- ADVISORY ZONE A
- ADVISORY ZONE X

- [+XX.X] EXISTING GRADE
- +XX.X PROPOSED GRADE
- X% % SLOPE
- +16'
- +11.5'



CONCEPT DESIGN

IMAGINE. TEST. LISTEN.

ESTABLISH GUIDING PRINCIPLES, PROJECT GOALS
AND OVERALL IDENTITY

LISTEN. ENGAGE.



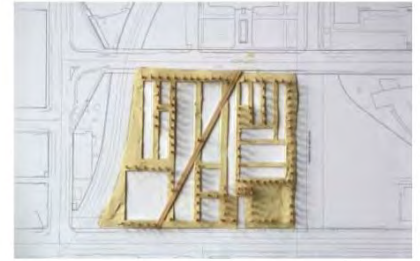
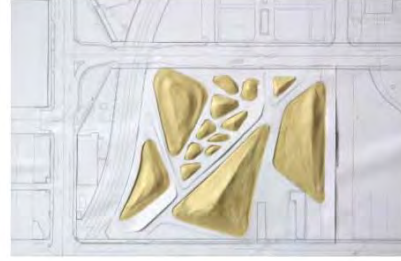
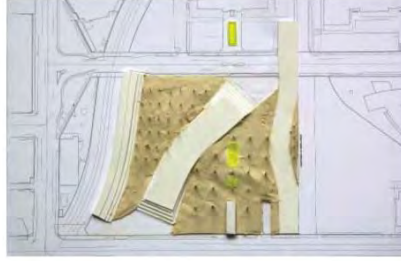
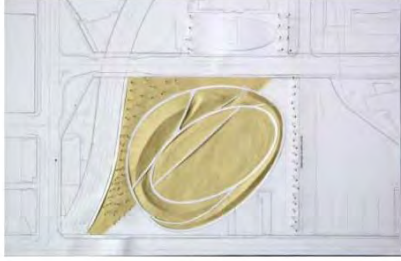
Play Workshop, Shelby Farms Park, Memphis

JAMES
CORNER
FIELD
OPERATIONS

DEFINE PROGRAM AND FRAMEWORK



EXPLORE OPTIONS



EXPLORE OPTIONS



1. THE WASH



2. THE RAVINE



3. THE DUNE

SCHEMATIC DESIGN

CONTINUE TO BUILD CONSENSUS
AND DEVELOP THE CONCEPT

SHARE + LISTEN



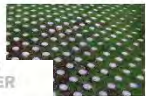
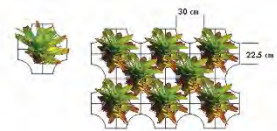
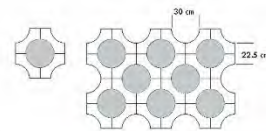
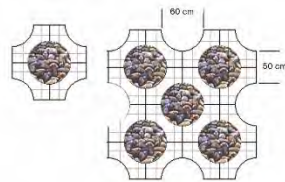
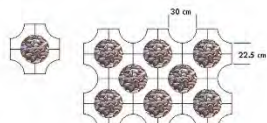
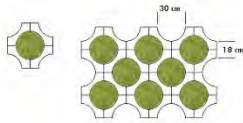
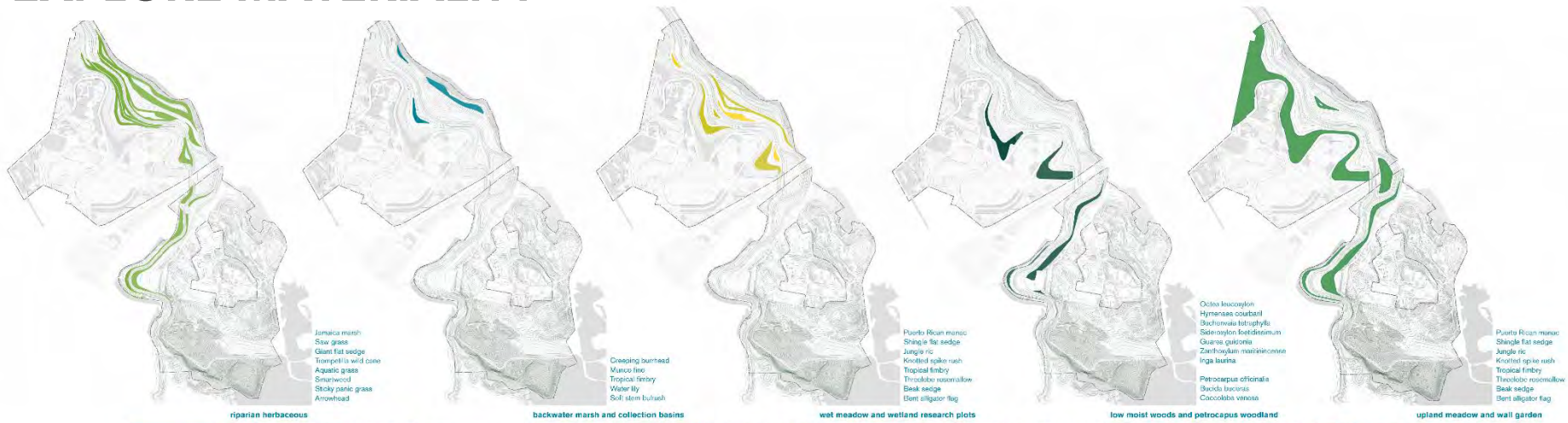
COMMUNITY WORKSHOPS, THE UNDERLINE, MIAMI, FL



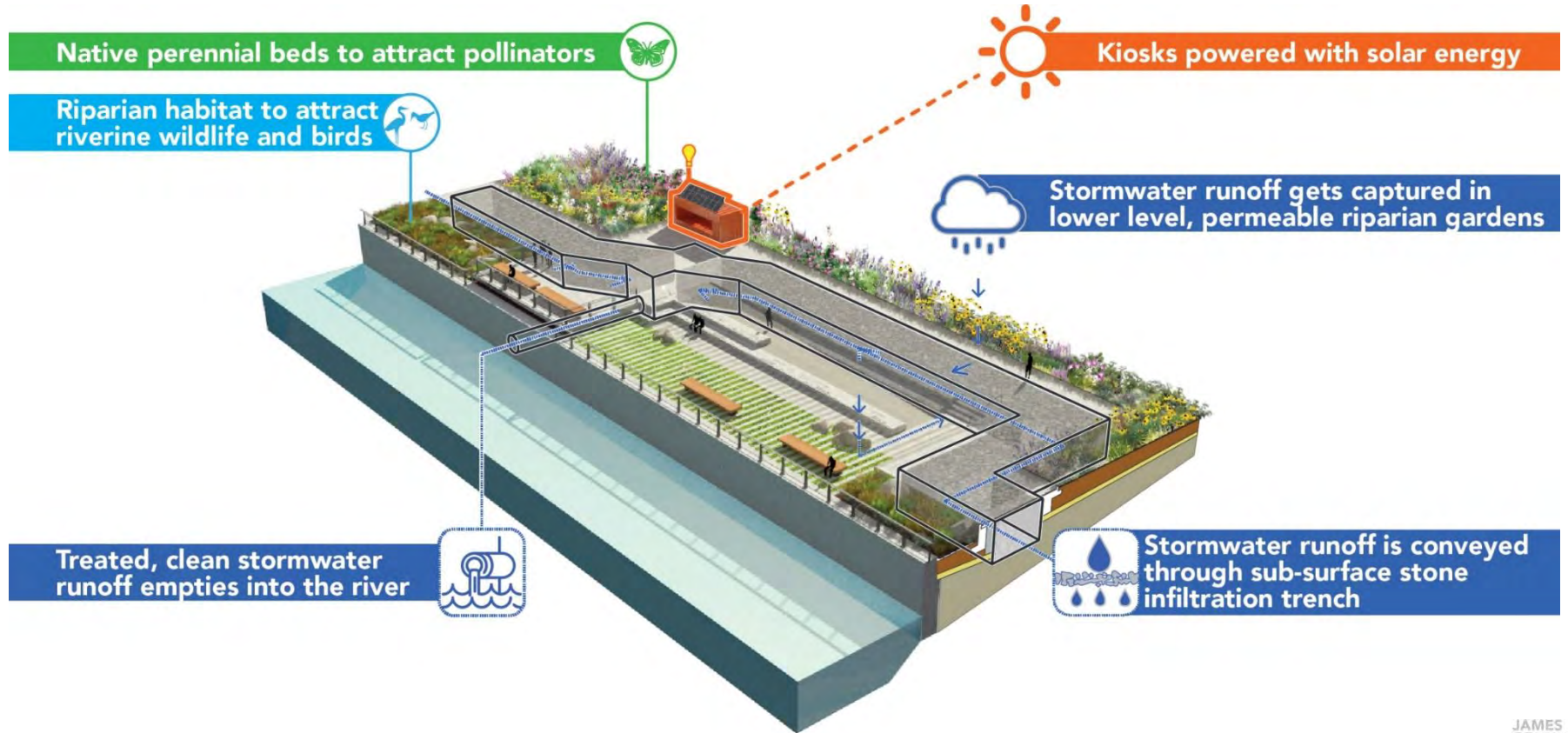
DEVELOP LAYOUT AND AMENITIES



EXPLORE MATERIALITY



INTEGRATE SYSTEMS



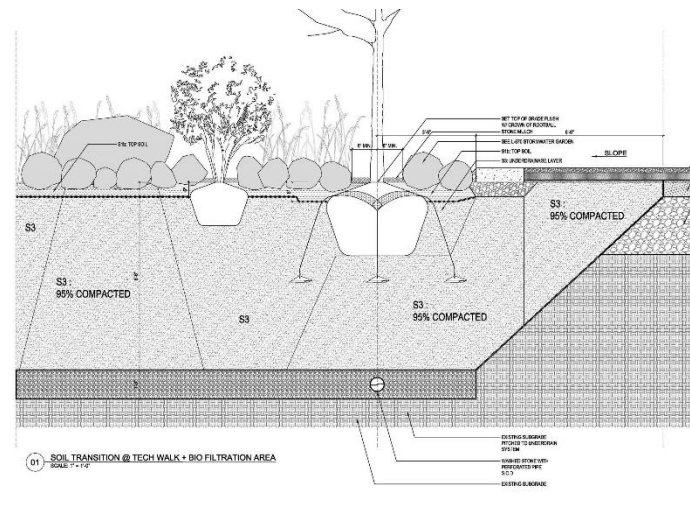
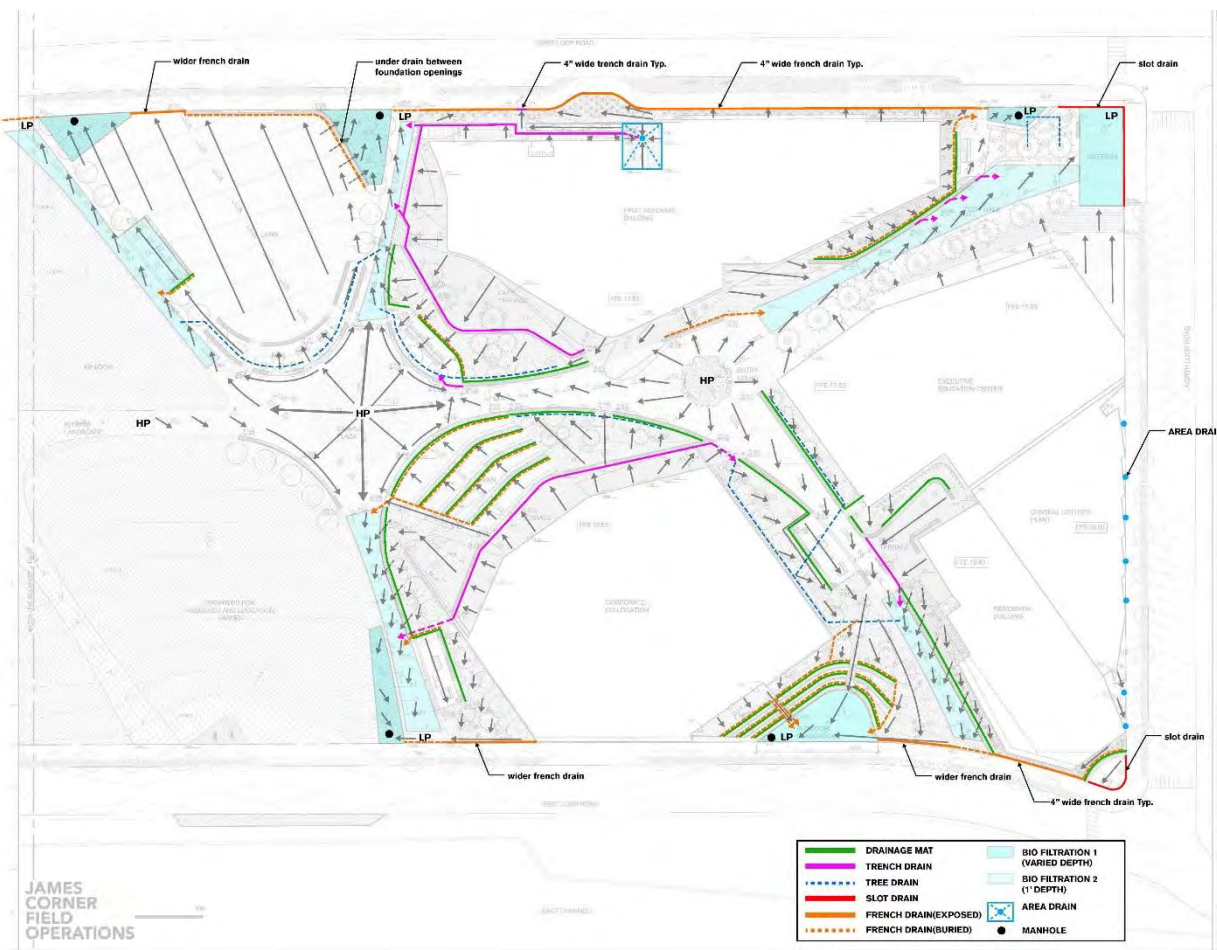
DESIGN DEVELOPMENT

GUIDE THE DEVELOPMENT OF THE PROJECT BY INTEGRATING SYSTEMS AND FINALIZING MAJOR DESIGN DECISIONS, WITH CONSIDERATIONS OF COST AND COMPLIANCE

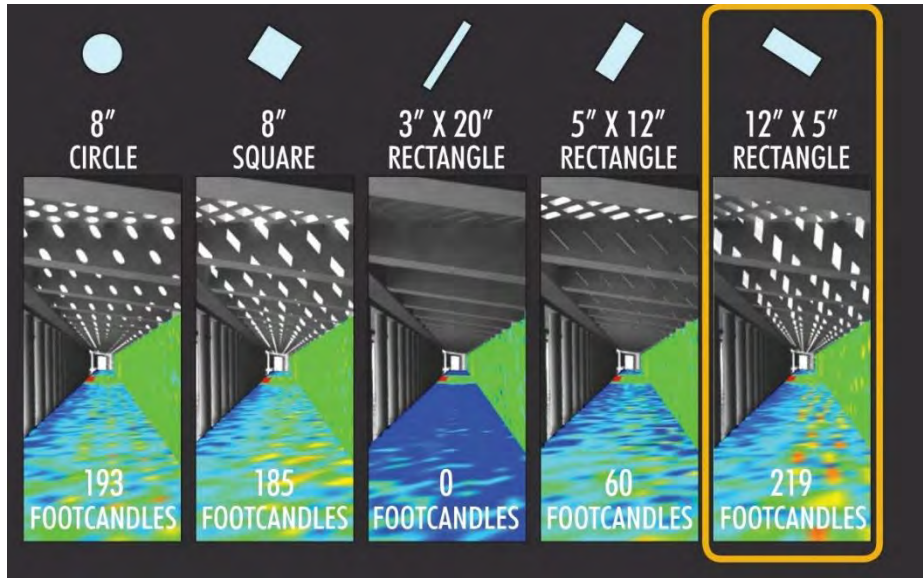
PRESENT PROGRESS



DEVELOP SYSTEMS



DEVELOP DETAILS + MATERIALS



Hibiscus moscheutos
Rose mallow



Amsonia hubrichtii
Blue Star



Lobelia cardinalis
Cardinal flower



Aster novi-belgii
New York Aster



Helianthus angustifolius
Swamp Sunflower



Asclepias tuberosa
Butterfly weed

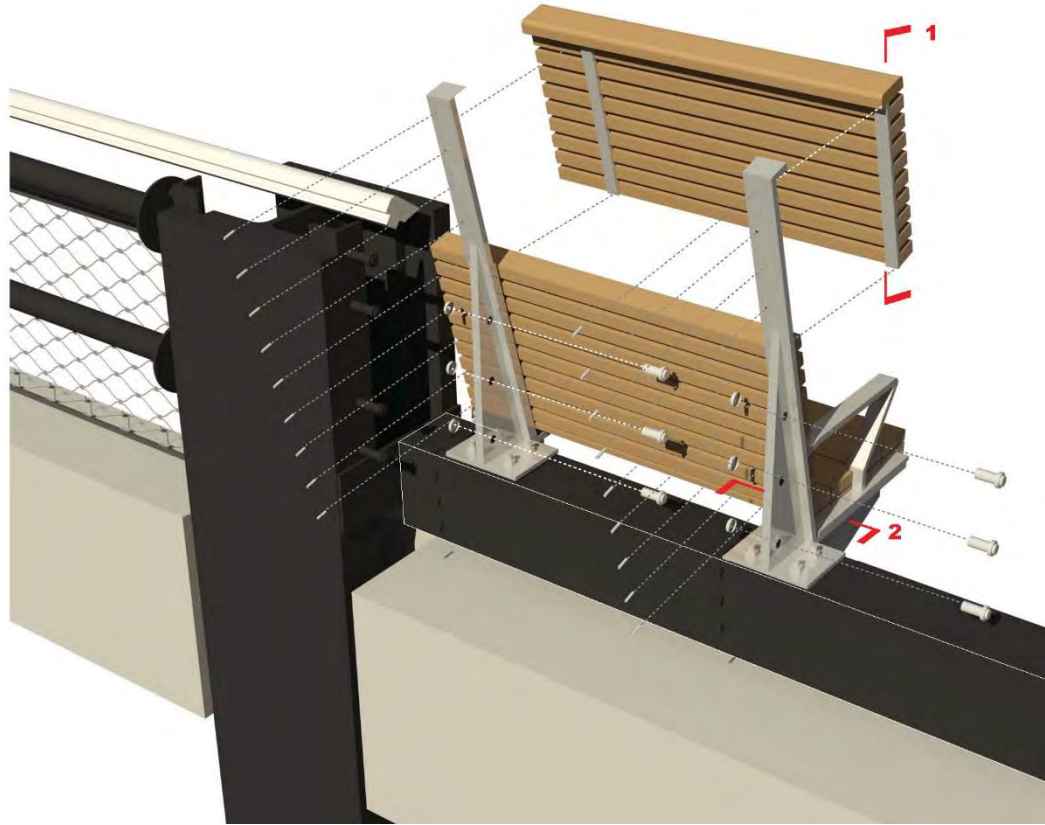
CONSTRUCTION DOCS.

DEVELOP DETAILING WITH SPECIAL ATTENTION TO
CONSTRUCTABILITY, MAINTENANCE, AND DURABILITY.

OBTAIN ALL PERMITS.

PREPARE BID SET.

DEVELOP DETAILS + CONSTRUCTABILITY



The High Line Section 3 Phase 2

SECTION DETAIL 1

1 1/2" x 4 1/4" WOOD SLATS END PIECE WITH COUNTERSUNK SCREW AND PLUG

3/4" S.S. SPACER

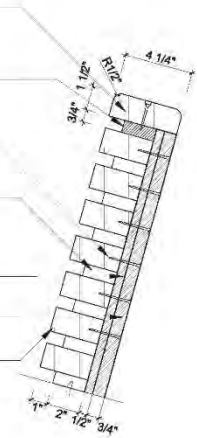
#10 S.S. x 3" LONG WOOD SCREWS, COUNTER SUNK

1/4" THK S.S. SPACER WELDED TO S.S. BENCH FRAME, 1" RECESSED FROM FINISHED WOOD SLAT SURFACE

1/2" THK S.S. SPACER

3/4" THK S.S. BENCH FRAME

1 1/2" x 3" WOOD SLATS



SECTION DETAIL 2

1/4" THK S.S. SPACER WELDED TO S.S. BENCH FRAME, 1" RECESSED FROM FINISHED WOOD SLAT SURFACE

#10 S.S. x 3" LONG WOOD SCREWS, COUNTER SUNK

1 1/2" x 3" WOOD SLATS

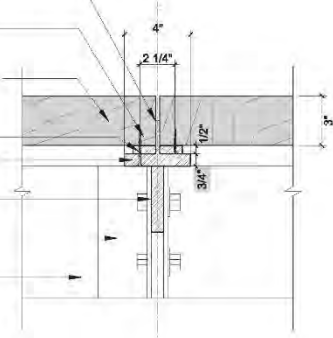
1/2" THK S.S. SPACER

3/4" THK S.S. BENCH FRAME

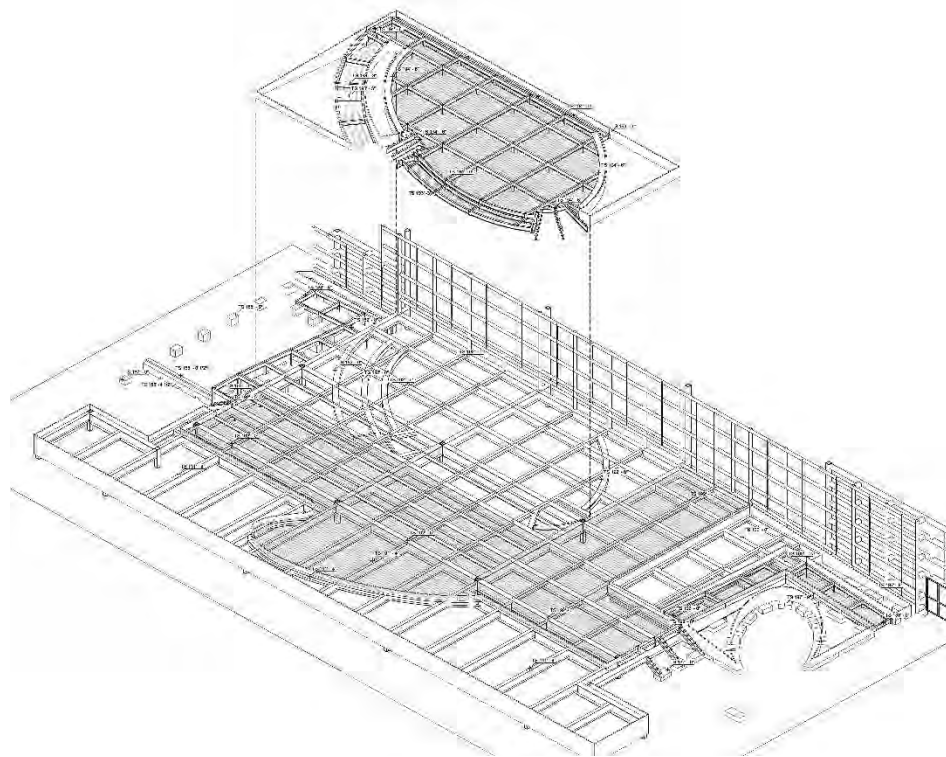
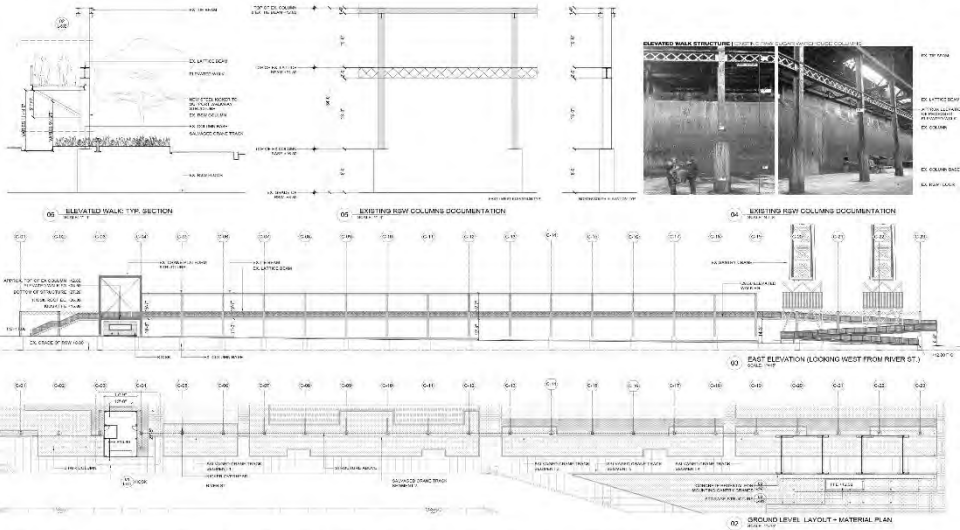
3/4" THK S.S. FIN

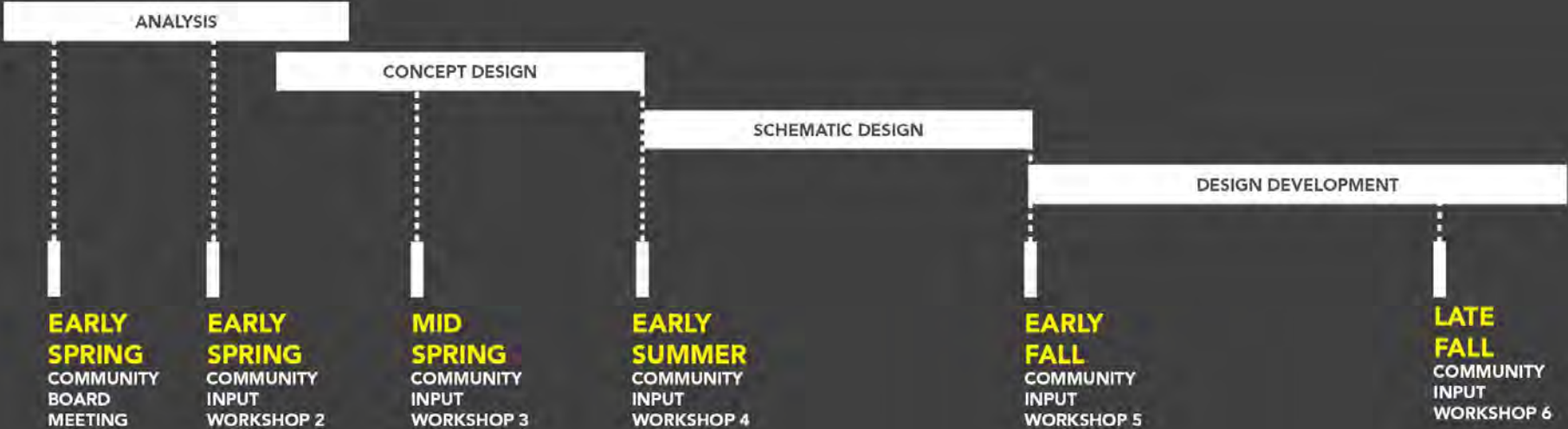
1/4" THK S.S. BRACKET WELDED TO BEAM

PAINTED STEEL BEAM



TEST, REFINE, FINALIZE





SITE

SITE

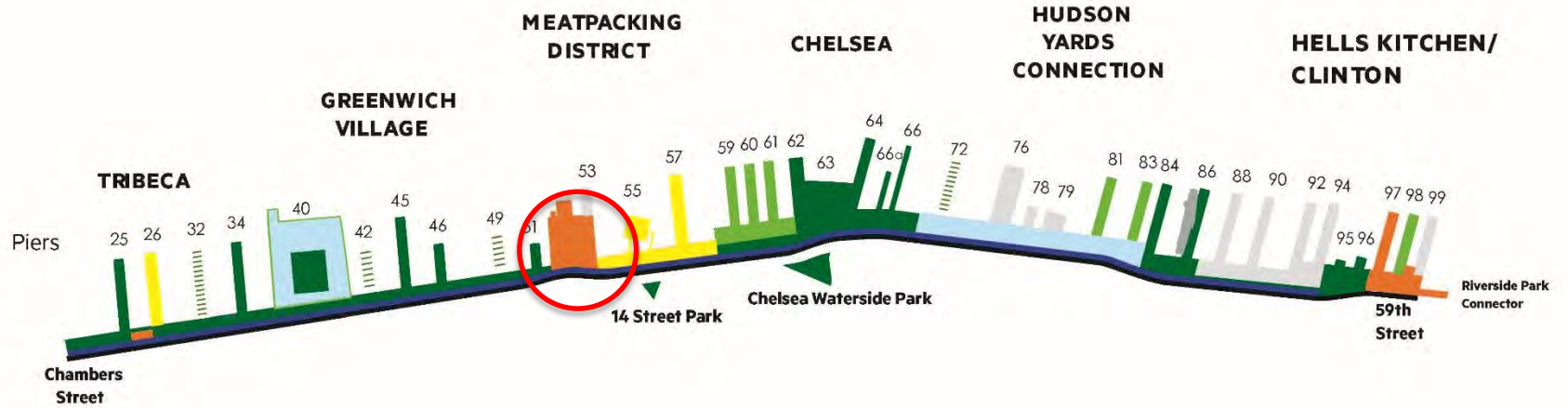
GANSEVOORT PENINSULA

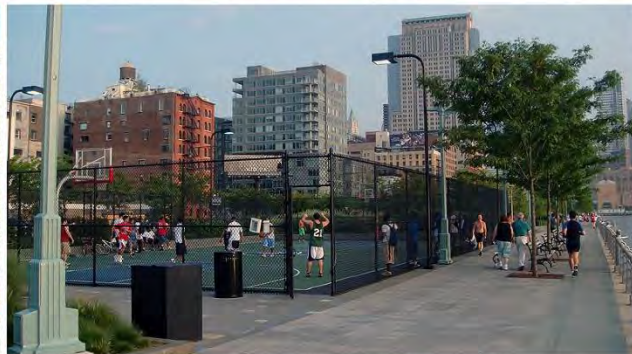
MEATPACKING DISTRICT

WEST SIDE HIGHWAY



PART OF A GREAT NY PARK





**GANSEVOORT
PENINSULA?**

PART OF A VIBRANT NEIGHBORHOOD



WASHINGTON SQ PARK



GREENWICH VILLAGE



14TH ST PARK IN HRP



HUDSON SQ NEIGHBORHOOD



MEAT PACKING DISTRICT



WHITNEY MUSEUM



THE HIGH LINE



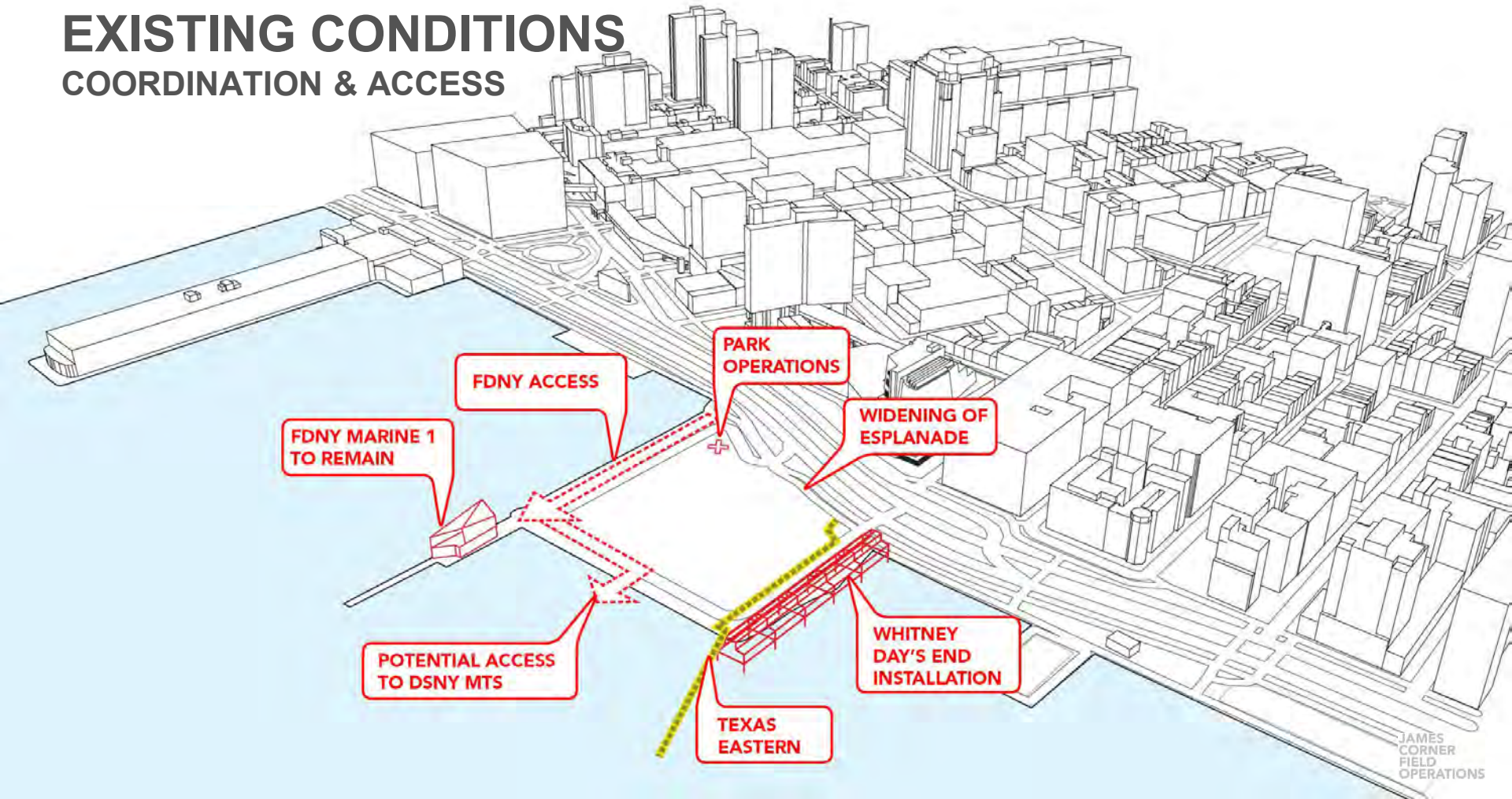
CHELSEA MARKET



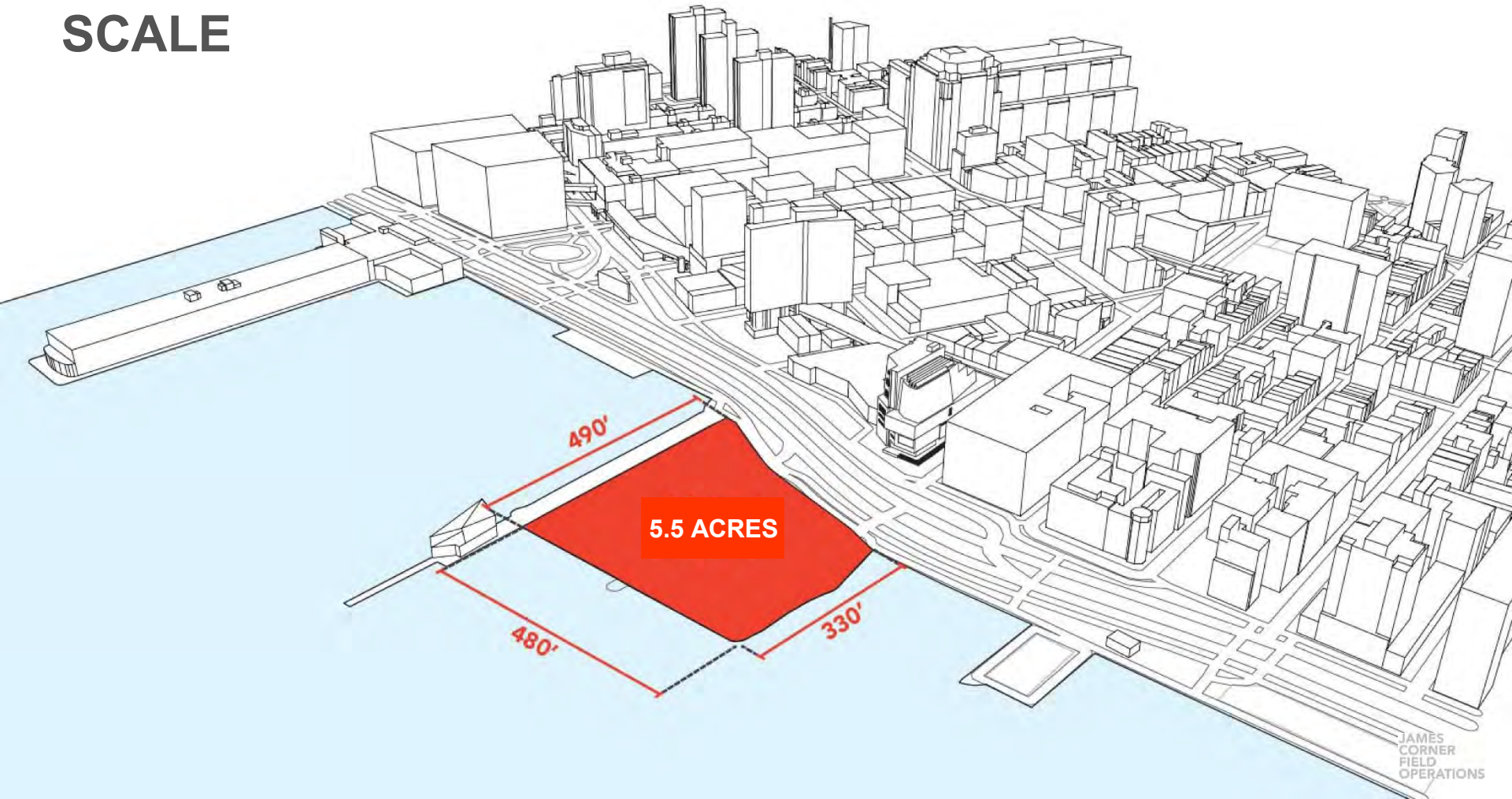
EXISTING CONDITIONS & THINGS TO CONSIDER

EXISTING CONDITIONS

COORDINATION & ACCESS



SCALE



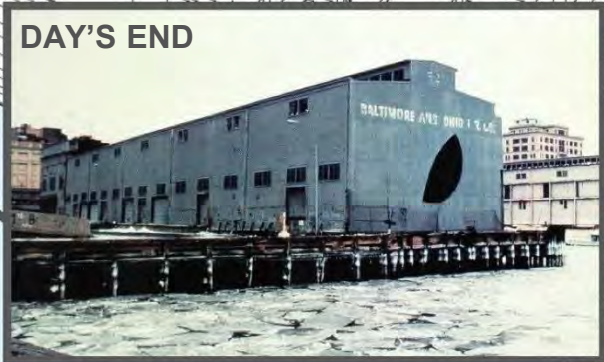
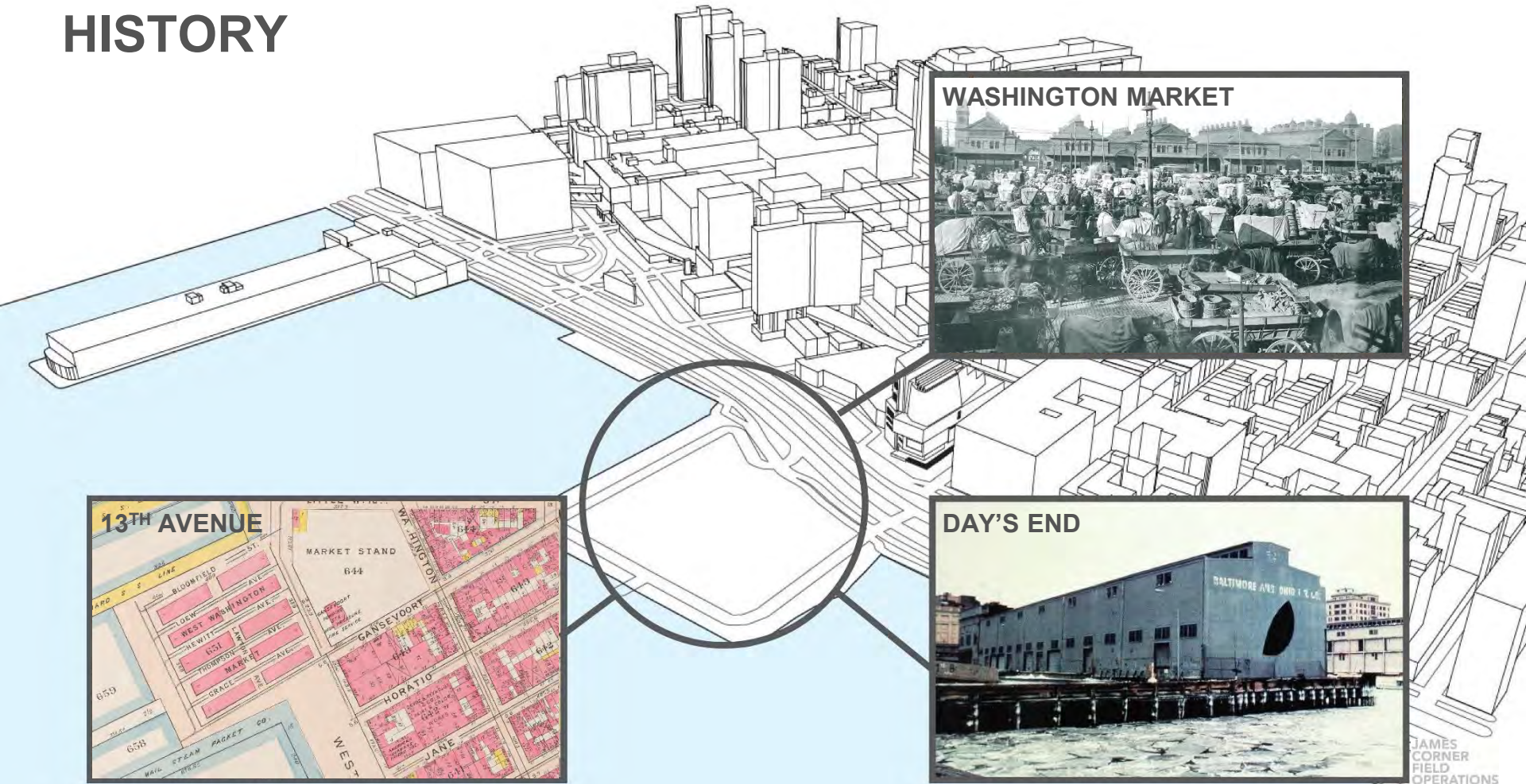
5.5 ACRES

490'

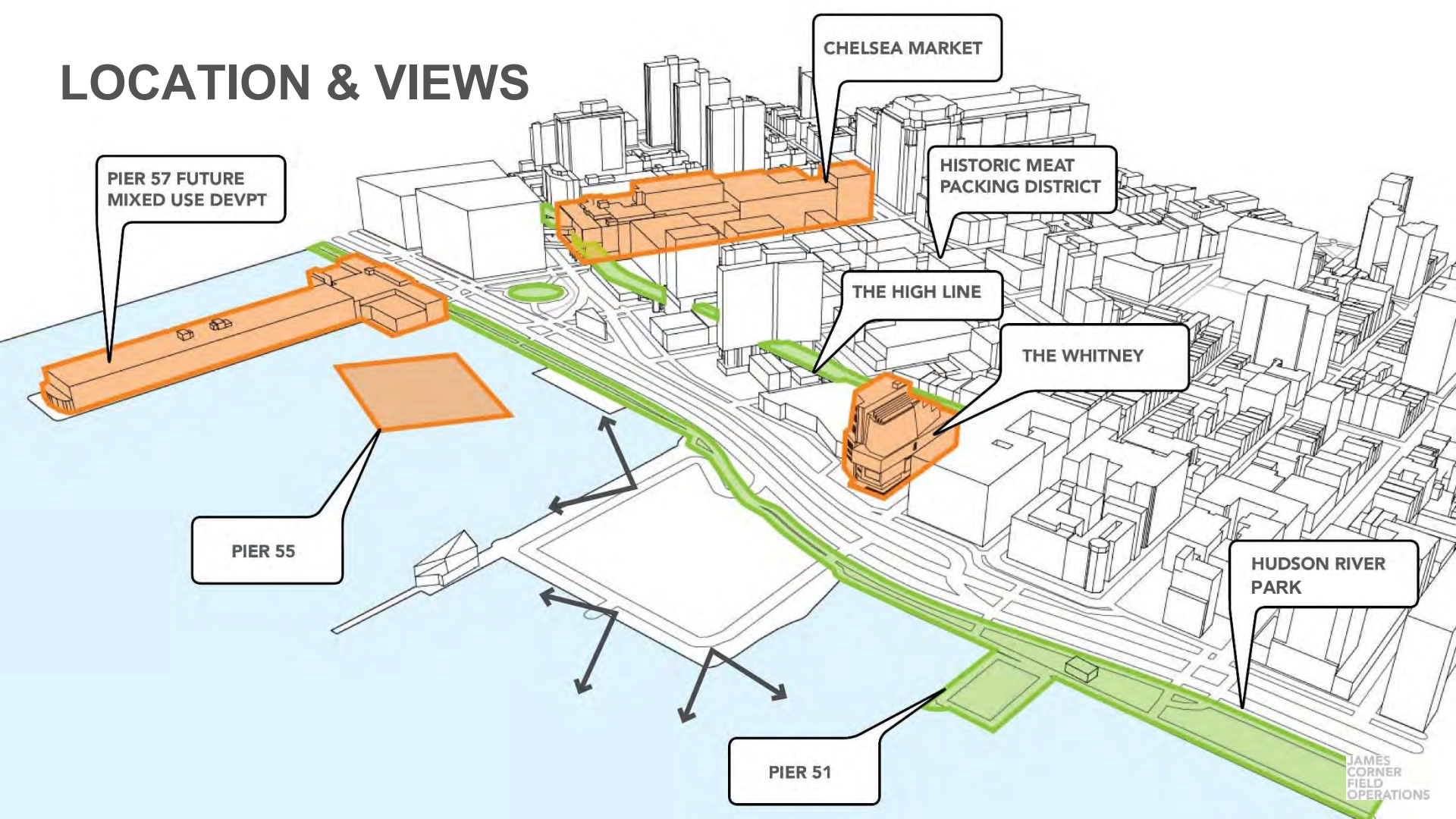
480'

330'

HISTORY



LOCATION & VIEWS



PIER 57 FUTURE
MIXED USE DEVPT

CHELSEA MARKET

HISTORIC MEAT
PACKING DISTRICT

THE HIGH LINE

THE WHITNEY

PIER 55

HUDSON RIVER
PARK

PIER 51

TO THE SOUTH



TO THE NORTH



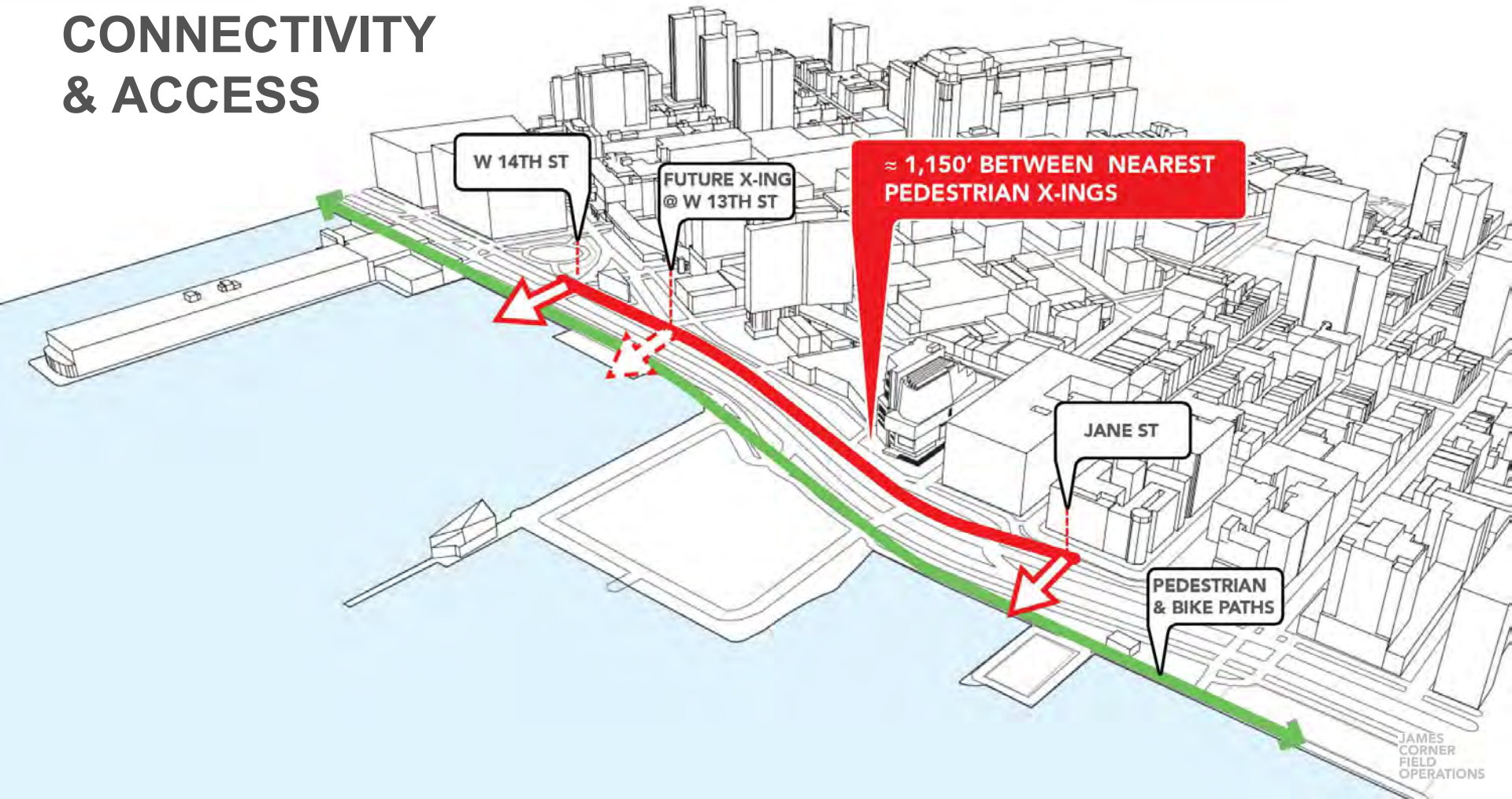
TO THE WEST



TO THE EAST



CONNECTIVITY & ACCESS



SEA LEVEL RISE & RESILIENCY



THREE STRATEGIES



FLOOD PROOFING



DESIGNING FOR
FLOODS

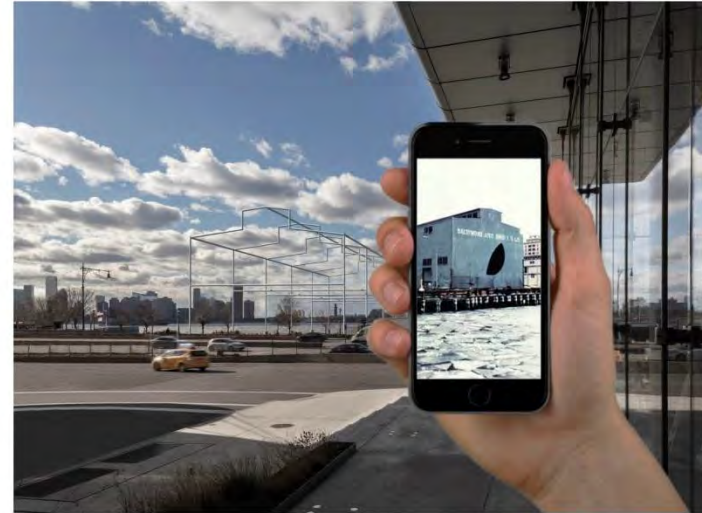


ELEVATING
INFRASTRUCTURE

INTEGRATION WITH DAY'S END

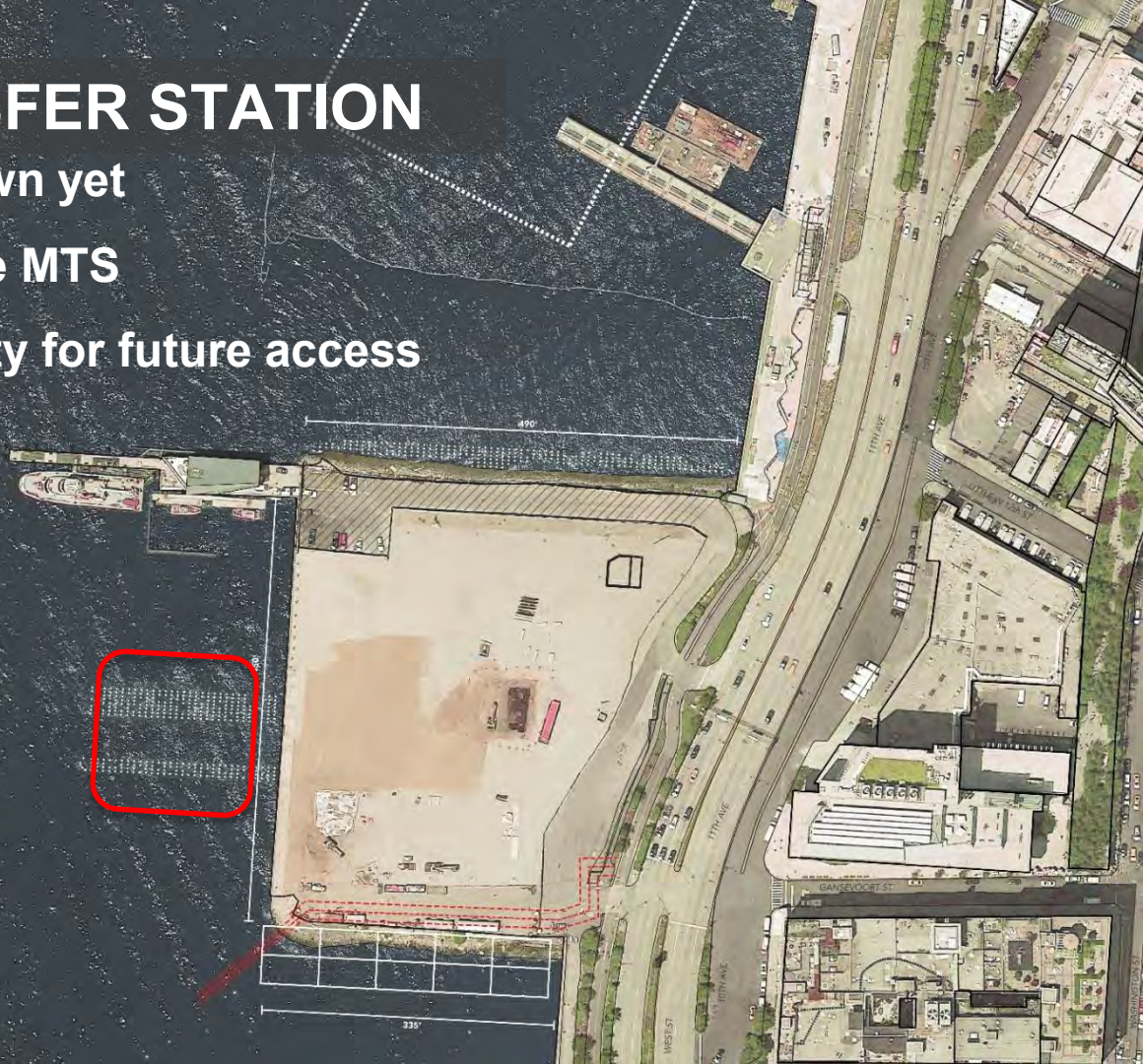


Looking North



DSNY MARINE TRANSFER STATION

- DSNY's timeline is not known yet
- Future access needs for the MTS
- Design will provide flexibility for future access



PROGRAM THOUGHT PROCESS

UNIQUE BEACH OPPORTUNITY

EXISTING SOUTHERN EDGE



TYPICAL BULKHEAD



BEACH TYPES



HABITAT BEACH



BEACH IN WATER



EMERGENT BEACH



SAND ON TOP OF BULKHEAD

PRELIMINARY BEACH DESIGN CONSIDERATIONS

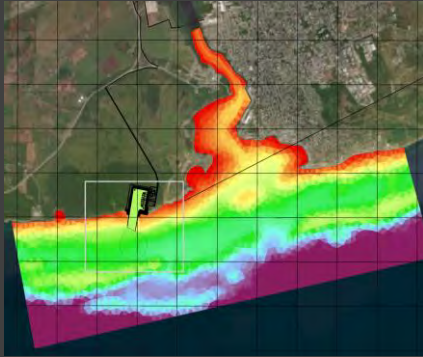
- **Beach Programing and Activities**
 - Boating / kayak?
 - Wading?
 - Habitat Enhancement?
- **Materials – sand / gravel / cobble / riprap / planted habitat**
- **Regulatory Constraints**
- **Resiliency**
- **Edge Protection**
- **Maintenance Requirements**

HABITAT ENHANCEMENT

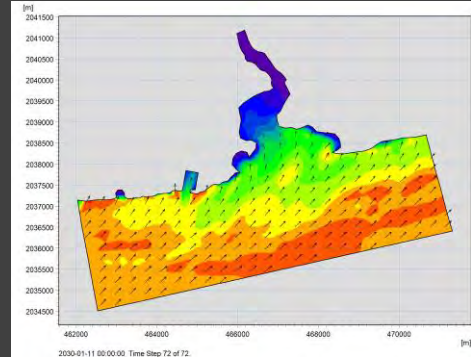


MARINE ENGINEERING & HYDRODYNAMIC MODELING

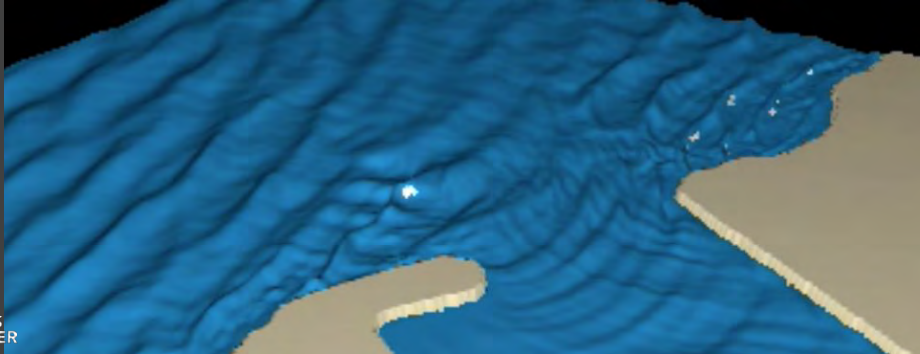
BATHYMETRY



WAVE CLIMATE



WAVE AGITATION



ACTIVE SPORTS



PLAY



ESTUARY EDUCATION



SPACES TO RELAX, SIT & GATHER



We want to hear from you!

CONTEXT

**WHAT ARE YOUR
FAVORITE WAYS TO
ENJOY PARKS?**

**IS THERE SOMETHING
MISSING IN
NEARBY PARKS OR
COMMUNITY SPACES
THAT YOU WISH YOU
HAD ACCESS TO, OR
THAT YOU WISH YOU
COULD DO MORE OF?**

**ANSWER THE QUESTIONS ON
YOUR NOTECARDS AND PIN
THEM TO THE BOARD**

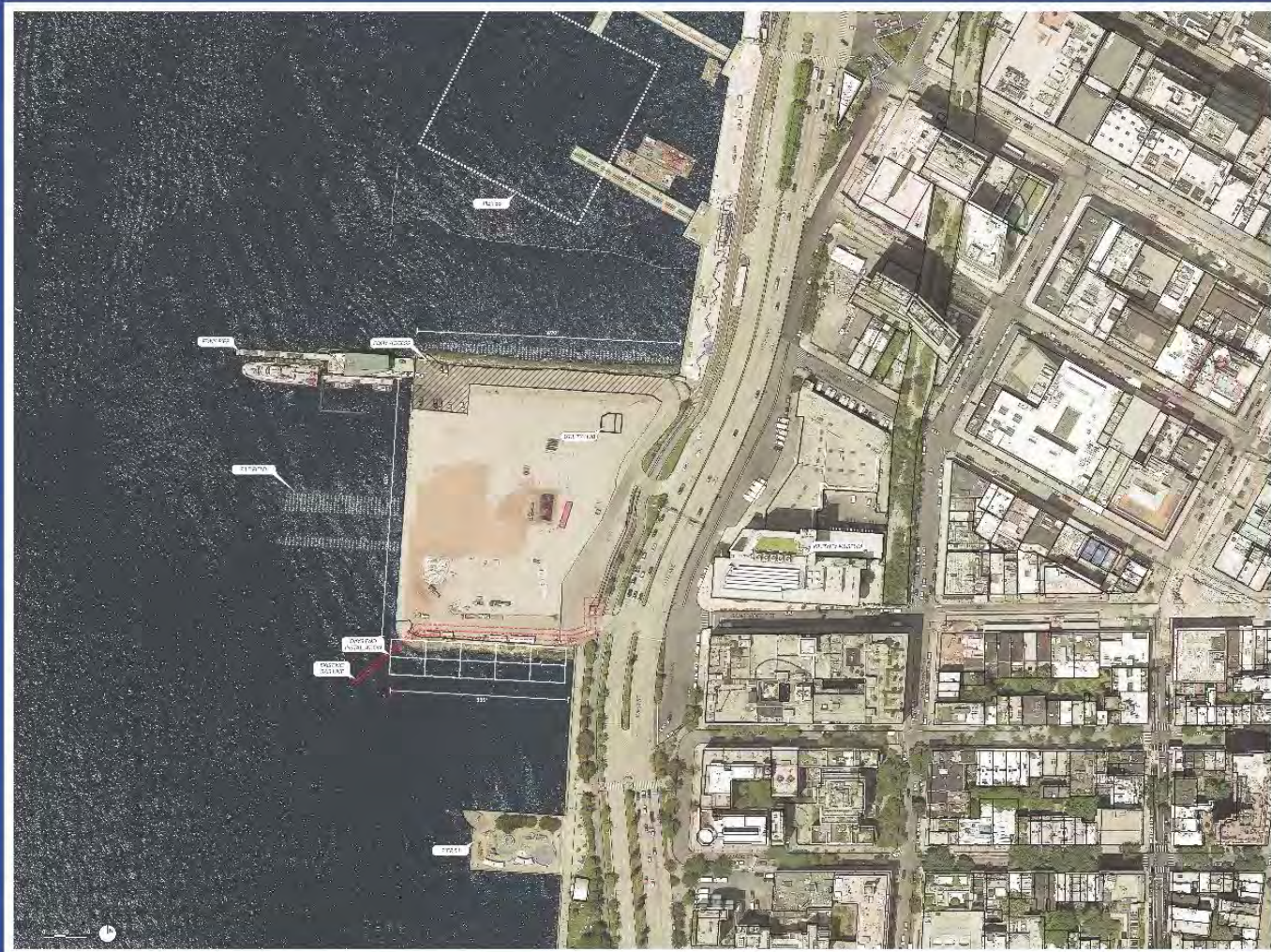


IDENTITY

WHAT MAKES
GANSEVOORT
PENINSULA A SPECIAL
OPPORTUNITY?

WHAT ARE KEY WORDS
THAT SPEAK TO THE
ATMOSPHERE YOU
HOPE THE SITE WILL
HAVE IN THE FUTURE?

USE THE POST-ITS TO PROVIDE
YOUR ANSWERS



PRIORITIES

WHAT ARE YOUR
TOP 2 PRIORITIES
FOR GANSEVOORT
PENINSULA?

USE THE SHARPIES TO WRITE IN
YOUR ANSWERS

HOW DO I STAY INVOLVED?

